

# APPALACHIAN HILLS WILDLIFE AREA

MORGAN, MUSKINGUM, NOBLE, AND GUERNSEY COUNTIES

38,414 ACRES

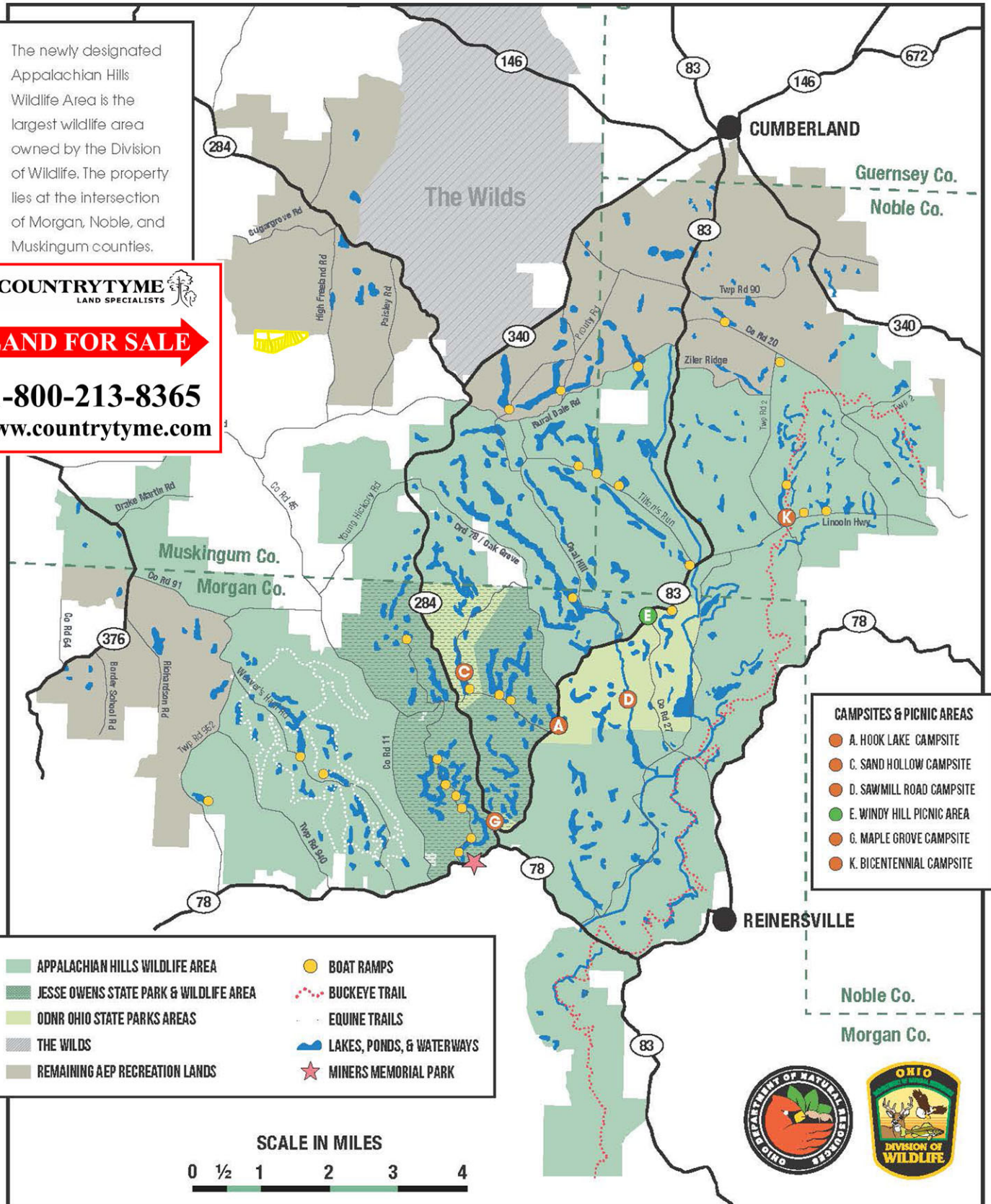
The newly designated Appalachian Hills Wildlife Area is the largest wildlife area owned by the Division of Wildlife. The property lies at the intersection of Morgan, Noble, and Muskingum counties.

**COUNTRYTYME**  
LAND SPECIALISTS

**LAND FOR SALE**

**1-800-213-8365**

[www.countrytyme.com](http://www.countrytyme.com)



**CAMPSESITS & PICNIC AREAS**

- A. HOOK LAKE CAMPSITE
- C. SAND HOLLOW CAMPSITE
- D. SAWMILL ROAD CAMPSITE
- E. WINDY HILL PICNIC AREA
- G. MAPLE GROVE CAMPSITE
- K. BICENTENNIAL CAMPSITE

- APPALACHIAN HILLS WILDLIFE AREA
- JESSE OWENS STATE PARK & WILDLIFE AREA
- ODNR OHIO STATE PARKS AREAS
- THE WILDS
- REMAINING AEP RECREATION LANDS
- BOAT RAMPS
- ⋯ BUCKEYE TRAIL
- ⋯ EQUINE TRAILS
- LAKES, PONDS, & WATERWAYS
- ★ MINERS MEMORIAL PARK

**SCALE IN MILES**

